

FLOAT SWITCH QUESTIONNAIRE



1. General Information

Note:

The following information will be required in order to place an order, should you only require a budget quotation please provide the information that you currently have. For assistance in completing this form please contact the AMS-IAC Sales Team on +44 (0)1726 839909.

Company Name	Company Ref No	AMS Ref No
Contact Phone No	Contact Email	
Company Address		

2. Process Conditions

Medium to be measured	Medium S.G					
Pressure						
Operating	Bar	PSI	Design/Maximum	Bar	PSI	
Temperature						
Operating	°C	°F	Design/Maximum	°C	°F	
Max Vertical Insertion Length (X)	mm	Max Horizontal Insertion Length (Y)	mm (Side Up/Down Options Only)			

Note:

Max lengths should only be stated where applicable. The dimension should be taken from the underside of the flange or threaded boss when mounted to the furthest point in the tank. For standard floats a xx mm is required from the bottom switch point, and for miniature floats xx mm is required from the bottom switch point.

3. Switching Information

Switch Number	Dimension	Switch Action						Switch Rating		
		MOR	MOF	BOR	BOF	COR	COF	250W SPST	60W SPDT	40W (1) SPST
1 (A)	mm									
2 (B)	mm									
3 (C)	mm									
4 (D)	mm									
5 (E)	mm									

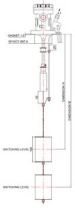
⁽¹⁾ 40W Reed Switch for Miniature Float option only

4. Series

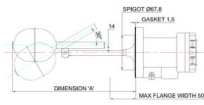
Engineered	Industrial	OEM	Custom/Other
------------	------------	-----	--------------

5. Style

Displacer



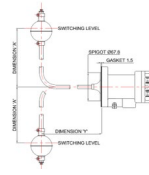
Horizontal



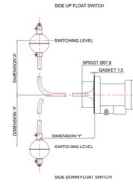
Vertical



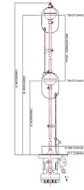
Side Up



Side Down



Bottom



Other(1)

(1) For other please provide a sketch/description of requirement on next page.

6. Process Connection Type

Engineered Series Square Flange (96x96)

ASME/ANSI Flange

PN Flange

Threaded

Other (Please state)

7. Process Connection Size

M10; 1" (DN25)

1.5" (DN40)

2" (DN50)

3" (DN75)

4" (DN100)

Other (Please state)

Note: The Engineered Series products are a 1 piece body with a 1.5" 150lb square flange. 3" to 6" adaptor flanges can be fitted if required.

8. Process Connection Pressure Rating

Class 150

Class 300

Class 600

Class 900

Other (Please state)

9. Enclosure Rating

None (Flying Leads Only)

Weatherproof; ATEX GRP II

ATEX GRP I (Mining)

Submersible

Other (Please state)

10. Enclosure Material

N/A

316 St/St

Aluminium

Other (Please state)

11: Wetted Parts Material

St/St (Std)

Hastelloy

Other (Please state)

12: Checkable Function

Not Required

Single

Lift

Push

Double

Lift

Push

Note: We are able to provide a checkable function on upto 2 switchpoints. The first switch point would be the top switch (nearest the flange/boss) and the second would be the next switch in line. Please indicate whether you require a lift to check (standard for high level switches) or push to check function.

